

**Bridge Construction works.**

All works off staging.

During any concrete pours "contaminated water" (high pH) will need to be collected and managed (refer to Project Erosion and Sediment Control Plan and Dewatering Procedures).

Augured piling material cut to waste (skip bins or trucks on staging).

Staging deck will need to be retained in a clean state.

TR3-C: Ti Rakau Drive

Ti Rakau Drive laydown yard.

Site to be used for construction laydown area once station removed.

New CMA stormwater outfall and erosion protection works.

Specific Methodology to be developed for the construction of the outfall.

Stormwater pond construction to occur late as will need the space for laydown area / bridge construction.

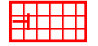





New CMA stormwater outfall and erosion protection works.

Specific Methodology to be developed for the construction of the outfall.

Pavement milling and resurfacing. Civil operations. No earthworks.


Berm works, cut and cover. Isolated cesspit protection

Existing kerb to provide cleanwater control during offline works.

KEY Erosion and Sediment Control	
	Decanting Earth Bund
	Area of Earthworks
	Stormwater Pond
	Silt Fence
	Perimeter Bund
	Stormwater Outfall Locations

- NOTES**
- All erosion and sediment controls will be installed and maintained in accordance with Auckland Council Guideline Document 2016/005 "Erosion and Sediment Control Guide for Land Disturbing Activities in the Auckland Region" (GD05).
  - All locations of controls are indicative and are to be confirmed on site.
  - The volumes of the sediment devices are to be confirmed following construction.
  - Sediment retention measures will be cleaned of sediment when 20% full of sediment.
  - Site monitoring will be undertaken before and immediately after rain as well as during heavy rainfall events. Any required maintenance or improvements to control measures will be undertaken immediately.
  - Erosion and sediment controls can be removed following stabilisation of site and sign off from the Environmental Manager.

REV	DATE	REVISION DETAILS	APPROVED
A	20.12.22	Concept ESCP	



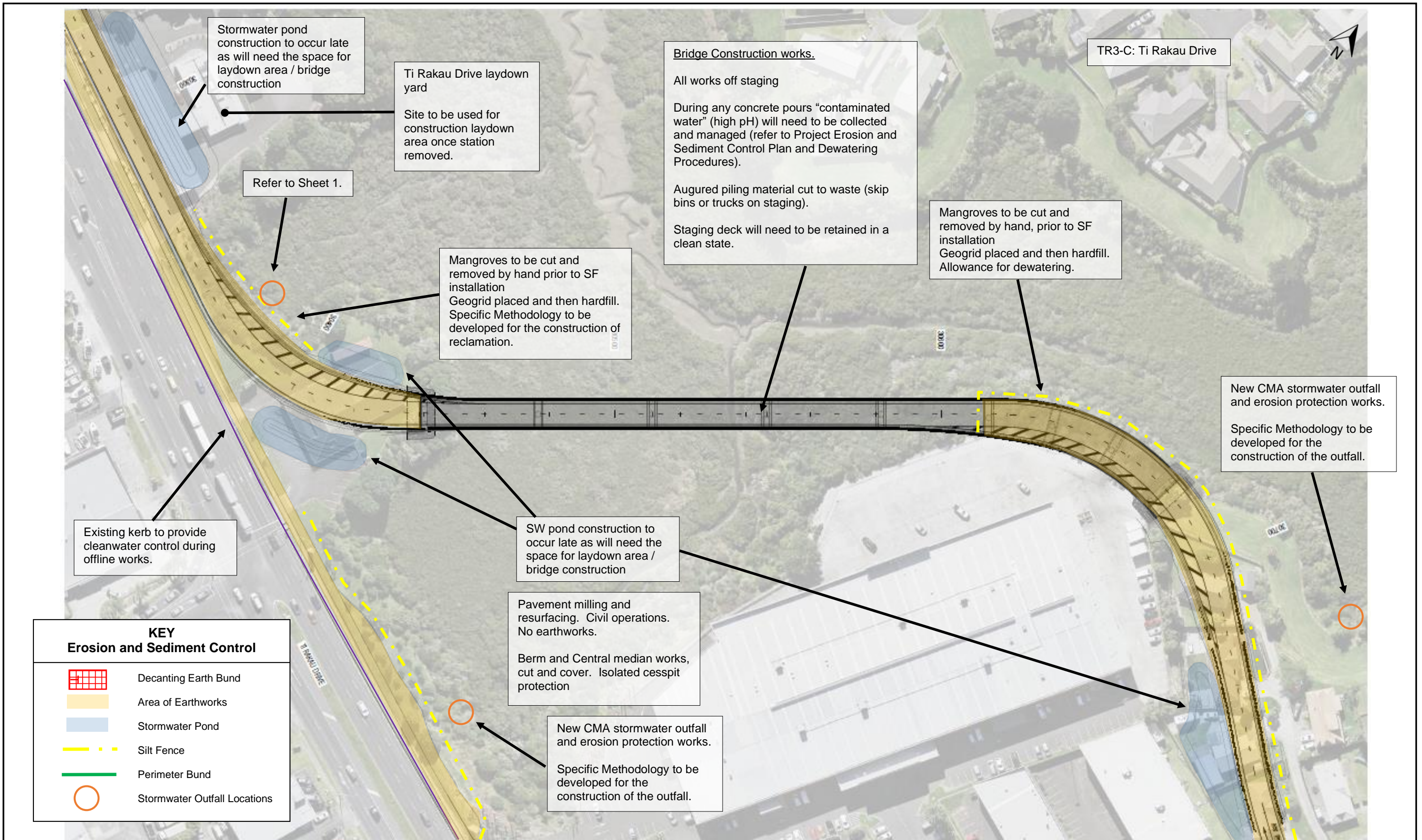
**Eastern Busway**

Drawing Title

**EB3-C EROSION AND SEDIMENT CONTROL  
Ti Rakau Drive**

Drawn CS	Approved	Drawing No. ESCP – EB3-C-1	Sheet No. 1	Revision A
-------------	----------	-------------------------------	----------------	---------------





Stormwater pond construction to occur late as will need the space for laydown area / bridge construction

Ti Rakau Drive laydown yard  
Site to be used for construction laydown area once station removed.

**Bridge Construction works.**  
All works off staging  
During any concrete pours "contaminated water" (high pH) will need to be collected and managed (refer to Project Erosion and Sediment Control Plan and Dewatering Procedures).  
Augured piling material cut to waste (skip bins or trucks on staging).  
Staging deck will need to be retained in a clean state.

TR3-C: Ti Rakau Drive

Refer to Sheet 1.

Mangroves to be cut and removed by hand prior to SF installation  
Geogrid placed and then hardfill. Specific Methodology to be developed for the construction of reclamation.

Mangroves to be cut and removed by hand, prior to SF installation  
Geogrid placed and then hardfill. Allowance for dewatering.

New CMA stormwater outfall and erosion protection works.  
Specific Methodology to be developed for the construction of the outfall.

Existing kerb to provide cleanwater control during offline works.

SW pond construction to occur late as will need the space for laydown area / bridge construction

Pavement milling and resurfacing. Civil operations. No earthworks.  
Berm and Central median works, cut and cover. Isolated cesspit protection

New CMA stormwater outfall and erosion protection works.  
Specific Methodology to be developed for the construction of the outfall.

KEY Erosion and Sediment Control	
	Decanting Earth Bund
	Area of Earthworks
	Stormwater Pond
	Silt Fence
	Perimeter Bund
	Stormwater Outfall Locations

- NOTES**
- All erosion and sediment controls will be installed and maintained in accordance with Auckland Council Guideline Document 2016/005 "Erosion and Sediment Control Guide for Land Disturbing Activities in the Auckland Region" (GD05).
  - All locations of controls are indicative and are to be confirmed on site.
  - The volumes of the sediment devices are to be confirmed following construction.
  - Sediment retention measures will be cleaned of sediment when 20% full of sediment.
  - Site monitoring will be undertaken before and immediately after rain as well as during heavy rainfall events. Any required maintenance or improvements to control measures will be undertaken immediately.
  - Erosion and sediment controls can be removed following stabilisation of site and sign off from the Environmental Manager.

REV	DATE	REVISION DETAILS	APPROVED
A	20.12.22	Concept ESCP	

**Eastern Busway**

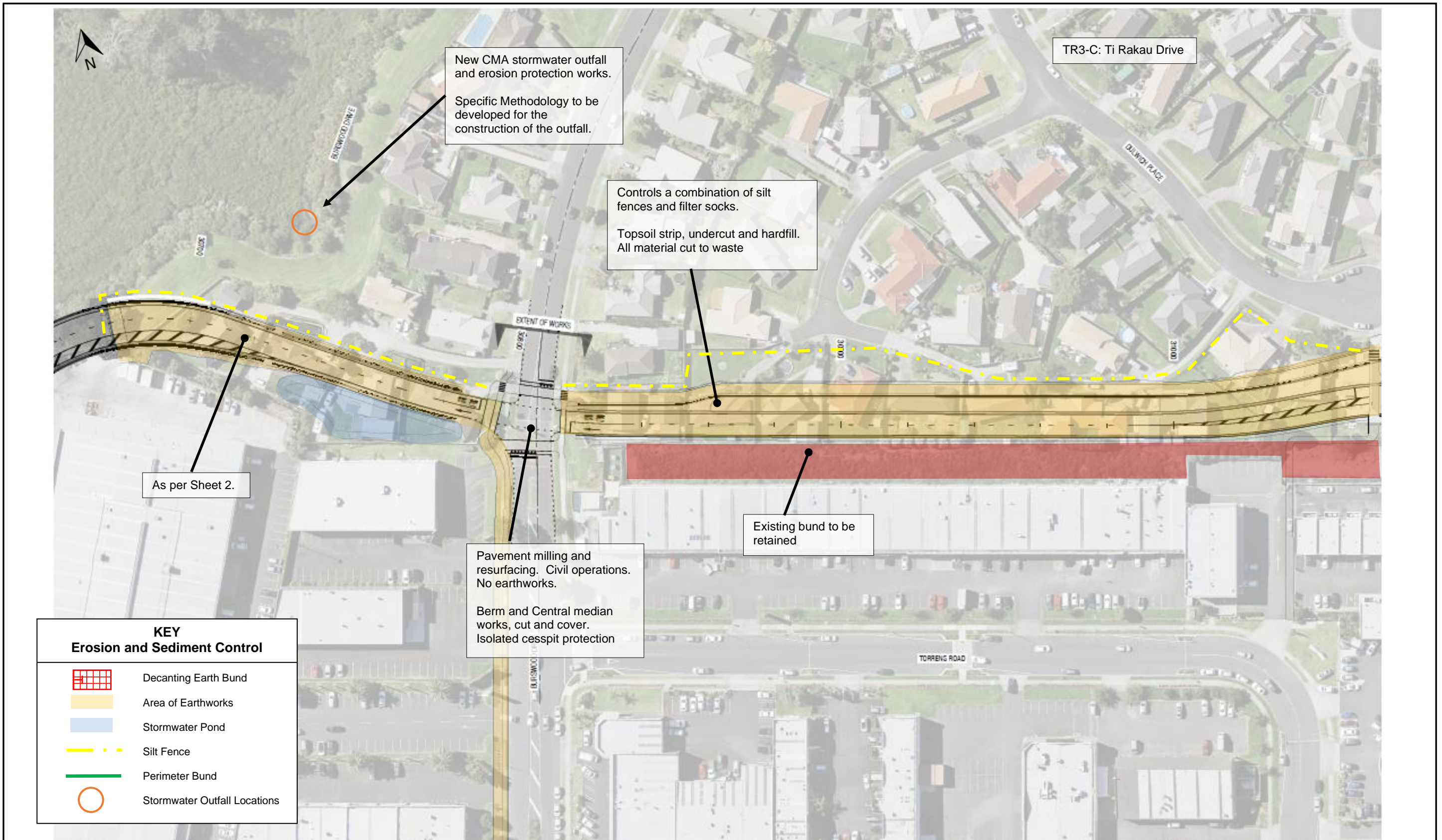
Drawing Title

**EB3-C EROSION AND SEDIMENT CONTROL**

**Ti Rakau Drive**

Drawn CS	Approved	Drawing No. ESCP – EB3-C-2	Sheet No. 2	Revision A
-------------	----------	-------------------------------	----------------	---------------





**KEY**  
**Erosion and Sediment Control**

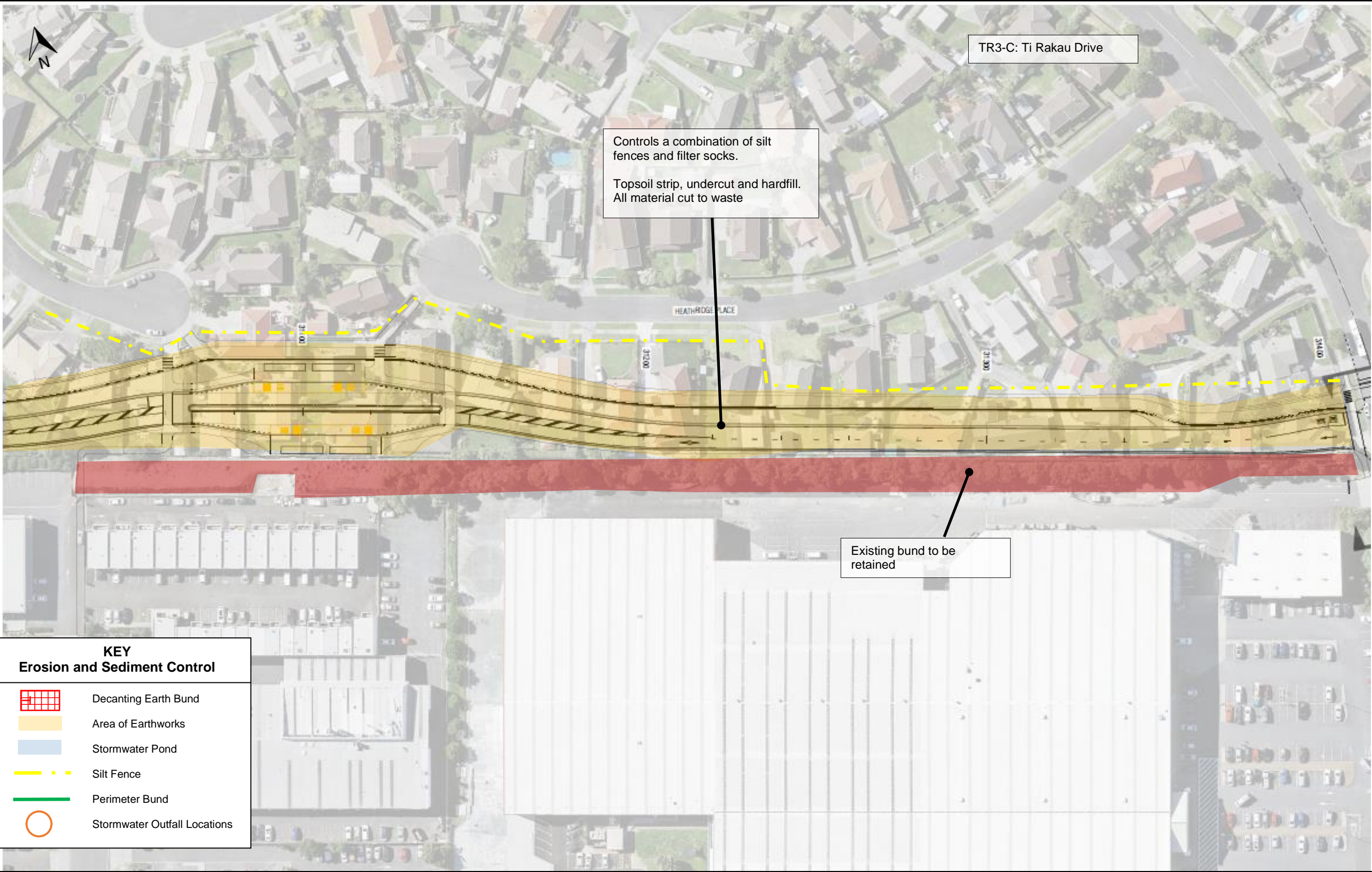
	Decanting Earth Bund
	Area of Earthworks
	Stormwater Pond
	Silt Fence
	Perimeter Bund
	Stormwater Outfall Locations

- NOTES**
- All erosion and sediment controls will be installed and maintained in accordance with Auckland Council Guideline Document 2016/005 "Erosion and Sediment Control Guide for Land Disturbing Activities in the Auckland Region" (GD05).
  - All locations of controls are indicative and are to be confirmed on site.
  - The volumes of the sediment devices are to be confirmed following construction.
  - Sediment retention measures will be cleaned of sediment when 20% full of sediment.
  - Site monitoring will be undertaken before and immediately after rain as well as during heavy rainfall events. Any required maintenance or improvements to control measures will be undertaken immediately.
  - Erosion and sediment controls can be removed following stabilisation of site and sign off from the Environmental Manager.

REV	DATE	REVISION DETAILS	APPROVED
A	20.12.22	Concept ESCP	

		Drawing Title <b>EB3-C EROSION AND SEDIMENT CONTROL</b> <b>Burswood Busway</b>		
		Drawing No. ESCP – EB3-C-3	Sheet No. 3	Revision A
Drawn CS	Approved			





**KEY**  
**Erosion and Sediment Control**

	Decanting Earth Bund
	Area of Earthworks
	Stormwater Pond
	Silt Fence
	Perimeter Bund
	Stormwater Outfall Locations

- NOTES**
- All erosion and sediment controls will be installed and maintained in accordance with Auckland Council Guideline Document 2016/005 "Erosion and Sediment Control Guide for Land Disturbing Activities in the Auckland Region" (GD05).
  - All locations of controls are indicative and are to be confirmed on site.
  - The volumes of the sediment devices are to be confirmed following construction.
  - Sediment retention measures will be cleaned of sediment when 20% full of sediment.
  - Site monitoring will be undertaken before and immediately after rain as well as during heavy rainfall events. Any required maintenance or improvements to control measures will be undertaken immediately.
  - Erosion and sediment controls can be removed following stabilisation of site and sign off from the Environmental Manager.

REV	DATE	REVISION DETAILS	APPROVED
A	20.12.22	Concept ESCP	

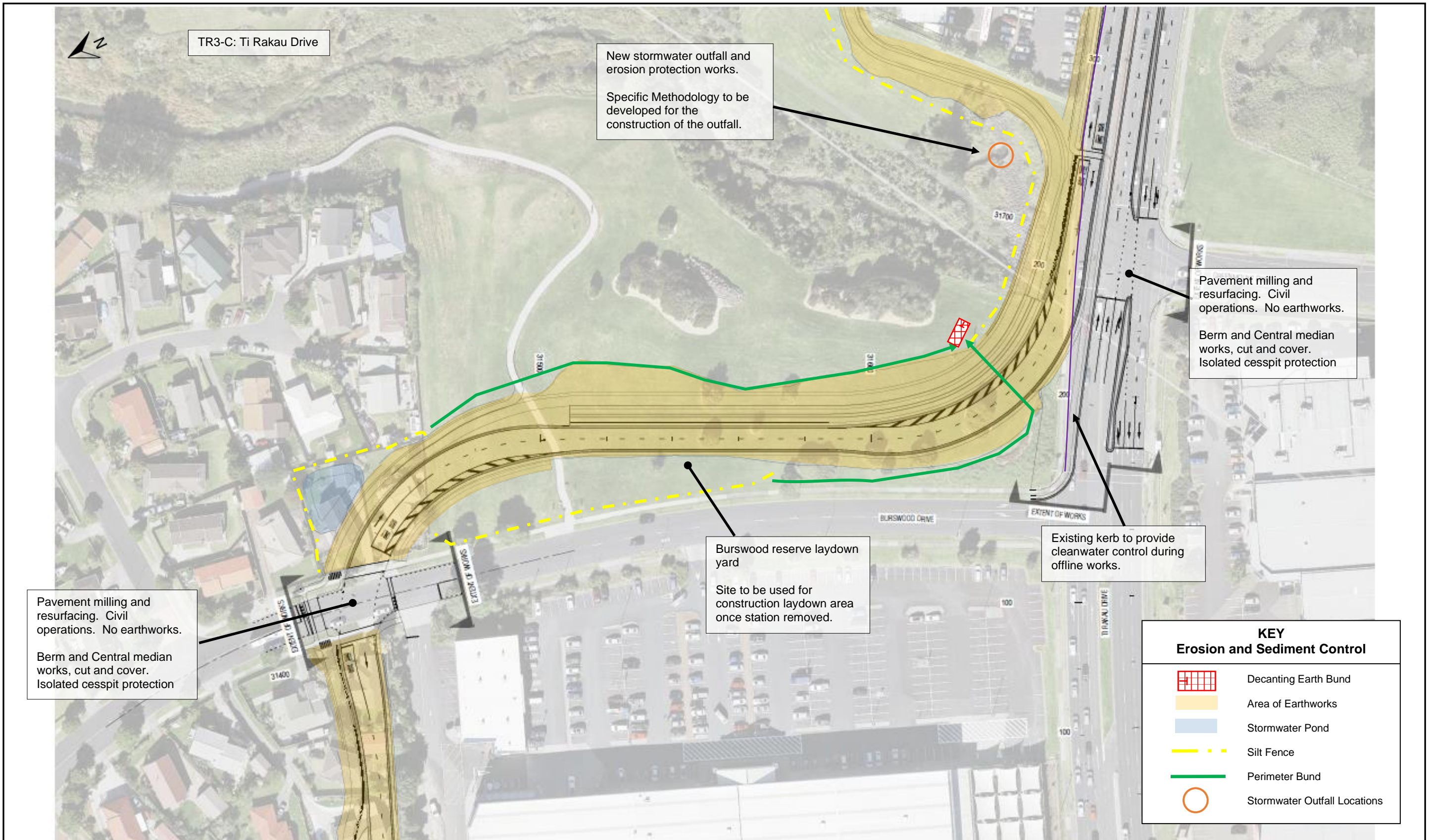
**Eastern Busway**

Drawn  
CS

Approved

Drawing Title <b>EB3-C EROSION AND SEDIMENT CONTROL Burswood Station and Busway</b>		
Drawing No. ESCP – EB3-C-4	Sheet No. 4	Revision A





Pavement milling and resurfacing. Civil operations. No earthworks.

Berm and Central median works, cut and cover. Isolated cesspit protection

New stormwater outfall and erosion protection works.

Specific Methodology to be developed for the construction of the outfall.

Pavement milling and resurfacing. Civil operations. No earthworks.

Berm and Central median works, cut and cover. Isolated cesspit protection

Burswood reserve laydown yard

Site to be used for construction laydown area once station removed.

Existing kerb to provide cleanwater control during offline works.

KEY	
Erosion and Sediment Control	
	Decanting Earth Bund
	Area of Earthworks
	Stormwater Pond
	Silt Fence
	Perimeter Bund
	Stormwater Outfall Locations

- NOTES**
- All erosion and sediment controls will be installed and maintained in accordance with Auckland Council Guideline Document 2016/005 "Erosion and Sediment Control Guide for Land Disturbing Activities in the Auckland Region" (GD05).
  - All locations of controls are indicative and are to be confirmed on site.
  - The volumes of the sediment devices are to be confirmed following construction.
  - Sediment retention measures will be cleaned of sediment when 20% full of sediment.
  - Site monitoring will be undertaken before and immediately after rain as well as during heavy rainfall events. Any required maintenance or improvements to control measures will be undertaken immediately.
  - Erosion and sediment controls can be removed following stabilisation of site and sign off from the Environmental Manager.

REV	DATE	REVISION DETAILS	APPROVED
A	20.12.22	Concept ESCP	

**Eastern Busway**

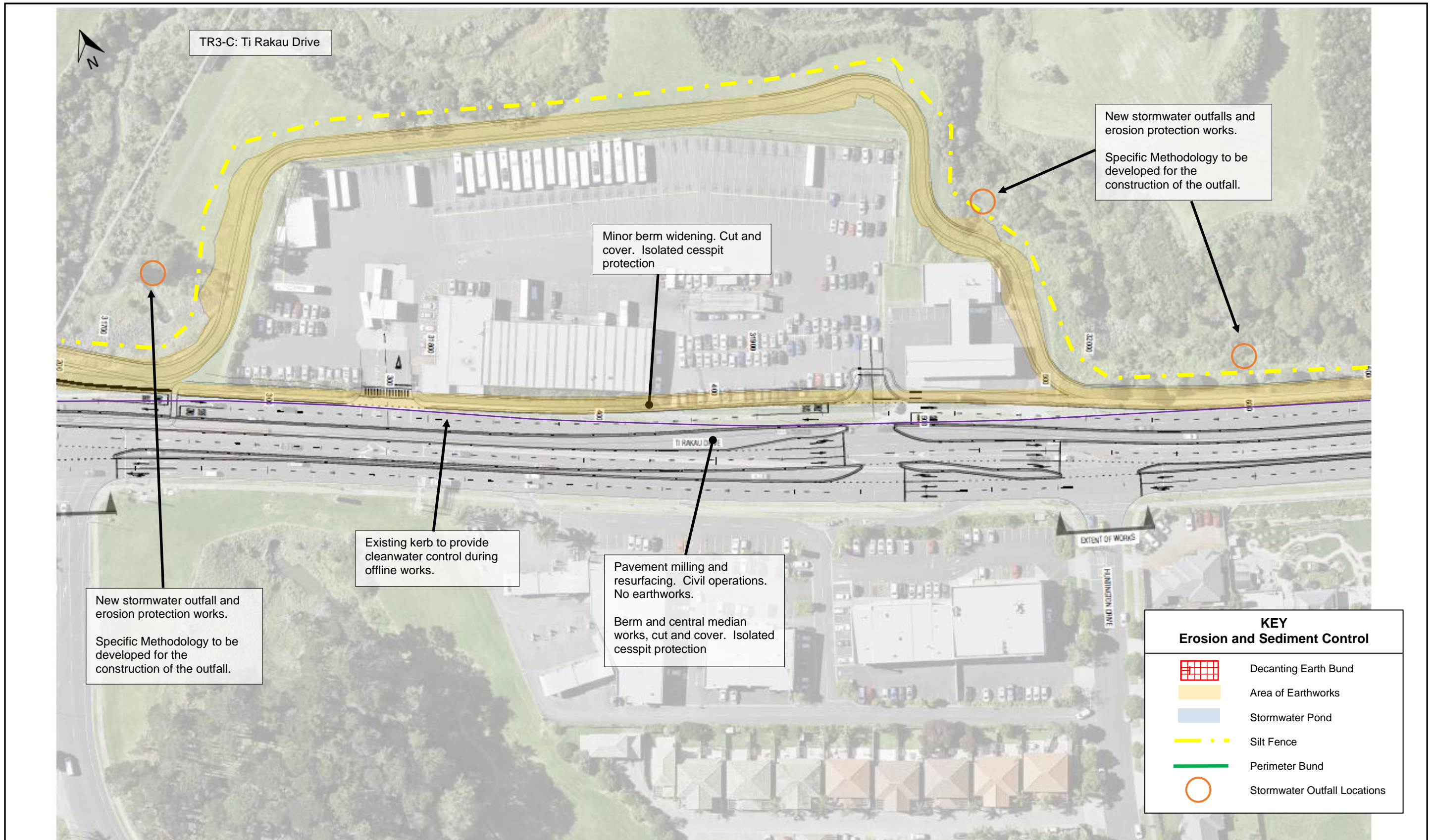
Drawing Title

**EB3-C EROSION AND SEDIMENT CONTROL**

**Burswood Reserve**

Drawn CS	Approved	Drawing No. ESCP – EB3-C-5	Sheet No. 5	Revision A
-------------	----------	-------------------------------	----------------	---------------





TR3-C: Ti Rakau Drive

New stormwater outfalls and erosion protection works.  
Specific Methodology to be developed for the construction of the outfall.

Minor berm widening. Cut and cover. Isolated cesspit protection

Existing kerb to provide cleanwater control during offline works.

Pavement milling and resurfacing. Civil operations. No earthworks.  
Berm and central median works, cut and cover. Isolated cesspit protection

New stormwater outfall and erosion protection works.  
Specific Methodology to be developed for the construction of the outfall.

KEY Erosion and Sediment Control	
	Decanting Earth Bund
	Area of Earthworks
	Stormwater Pond
	Silt Fence
	Perimeter Bund
	Stormwater Outfall Locations

**NOTES**

- All erosion and sediment controls will be installed and maintained in accordance with Auckland Council Guideline Document 2016/005 "Erosion and Sediment Control Guide for Land Disturbing Activities in the Auckland Region" (GD05).
- All locations of controls are indicative and are to be confirmed on site.
- The volumes of the sediment devices are to be confirmed following construction.
- Sediment retention measures will be cleaned of sediment when 20% full of sediment.
- Site monitoring will be undertaken before and immediately after rain as well as during heavy rainfall events. Any required maintenance or improvements to control measures will be undertaken immediately.
- Erosion and sediment controls can be removed following stabilisation of site and sign off from the Environmental Manager.

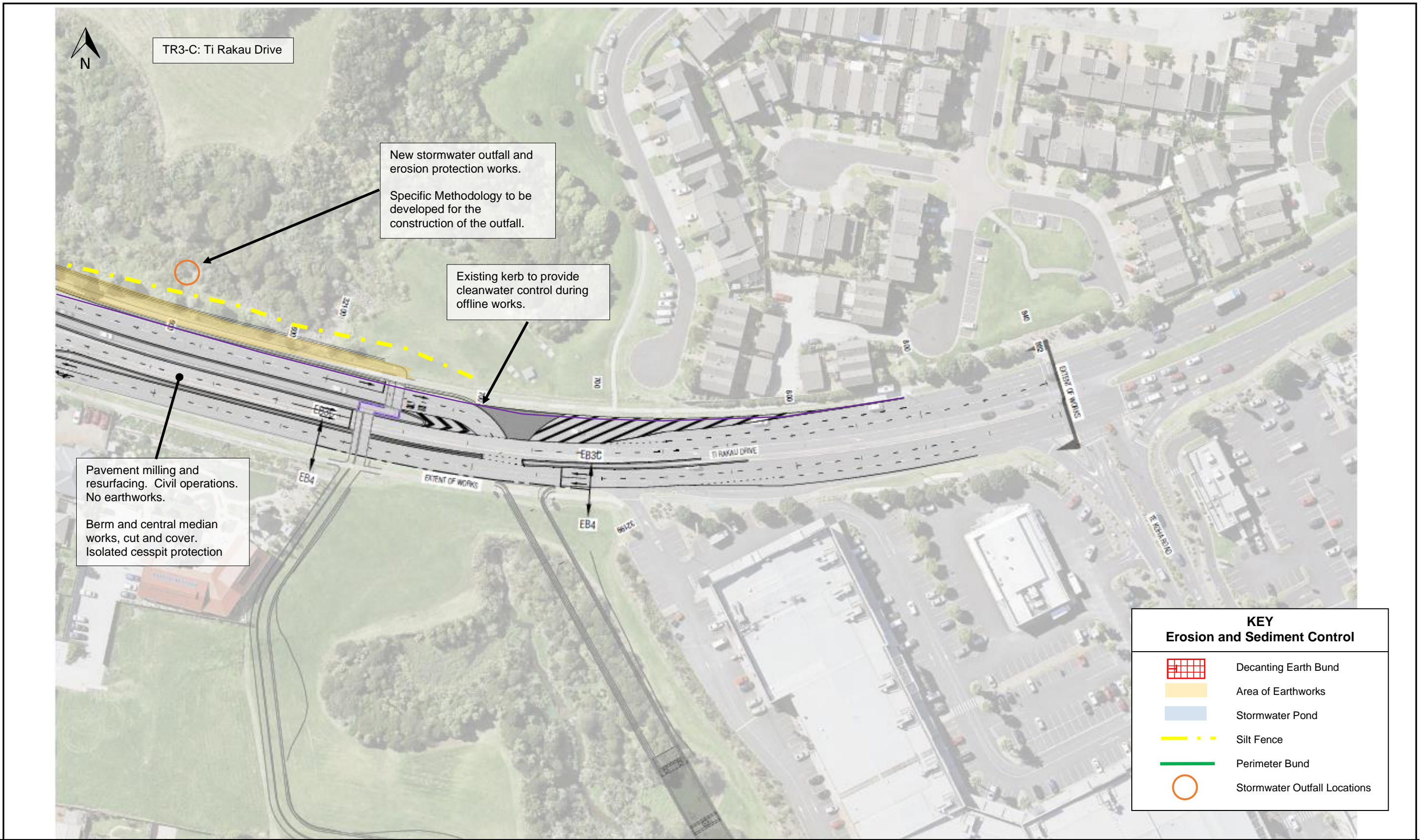
REV	DATE	REVISION DETAILS	APPROVED
A	20.12.22	Concept ESCP	



Drawing Title  
**EB3-C EROSION AND SEDIMENT CONTROL**  
Ti Rakau Drive


Drawn CS	Approved	Drawing No. ESCP – EB3-C-6	Sheet No. 6	Revision A
-------------	----------	-------------------------------	----------------	---------------





- NOTES**
- All erosion and sediment controls will be installed and maintained in accordance with Auckland Council Guideline Document 2016/005 "Erosion and Sediment Control Guide for Land Disturbing Activities in the Auckland Region" (GD05).
  - All locations of controls are indicative and are to be confirmed on site.
  - The volumes of the sediment devices are to be confirmed following construction.
  - Sediment retention measures will be cleaned of sediment when 20% full of sediment.
  - Site monitoring will be undertaken before and immediately after rain as well as during heavy rainfall events. Any required maintenance or improvements to control measures will be undertaken immediately.
  - Erosion and sediment controls can be removed following stabilisation of site and sign off from the Environmental Manager.

REV	DATE	REVISION DETAILS	APPROVED
A	20.12.22	Concept ESCP	



**Eastern Busway**

Drawing Title

**EB3-C EROSION AND SEDIMENT CONTROL**

**Ti Rakau Drive**

Drawn CS	Approved	Drawing No. ESCP – EB3-C-7	Sheet No. 7	Revision A
-------------	----------	-------------------------------	----------------	---------------